

# KALa

Finishing Systems

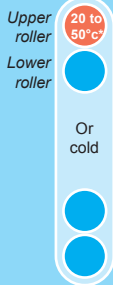
# MISTRAL 2000 HR

Cold laminator with upper heating roller up to 2.10 m (83")

Even though it is wider than most roll laminators, Mistral 2000 HR remains as easy to use as any other machine from KALA's range.

Mistral 2000 HR Laminating system is the only machine of its kind and in its price category to provide encapsulation in one pass or use of double side adhesive film with double protection liner on the lower roller.

Possible use of temperature



### Use of pressure sensitive films :

- Lamination
- Encapsulation
- Adhesive setting
- Mounting
- Lamination on one side and adhesive setting on the other in one pass

\*45°C 113°F recommended temperature for optimised results with cold films

Its upper roller heating system warm up the laminating film from 20°C to 50°C (68 to 122°F) in order to improve the polymerization process of the film onto the print. This eliminates micro bubbles usually seen when laminated with pressure sensitive laminators without heater elements and earns optimised customer satisfaction.



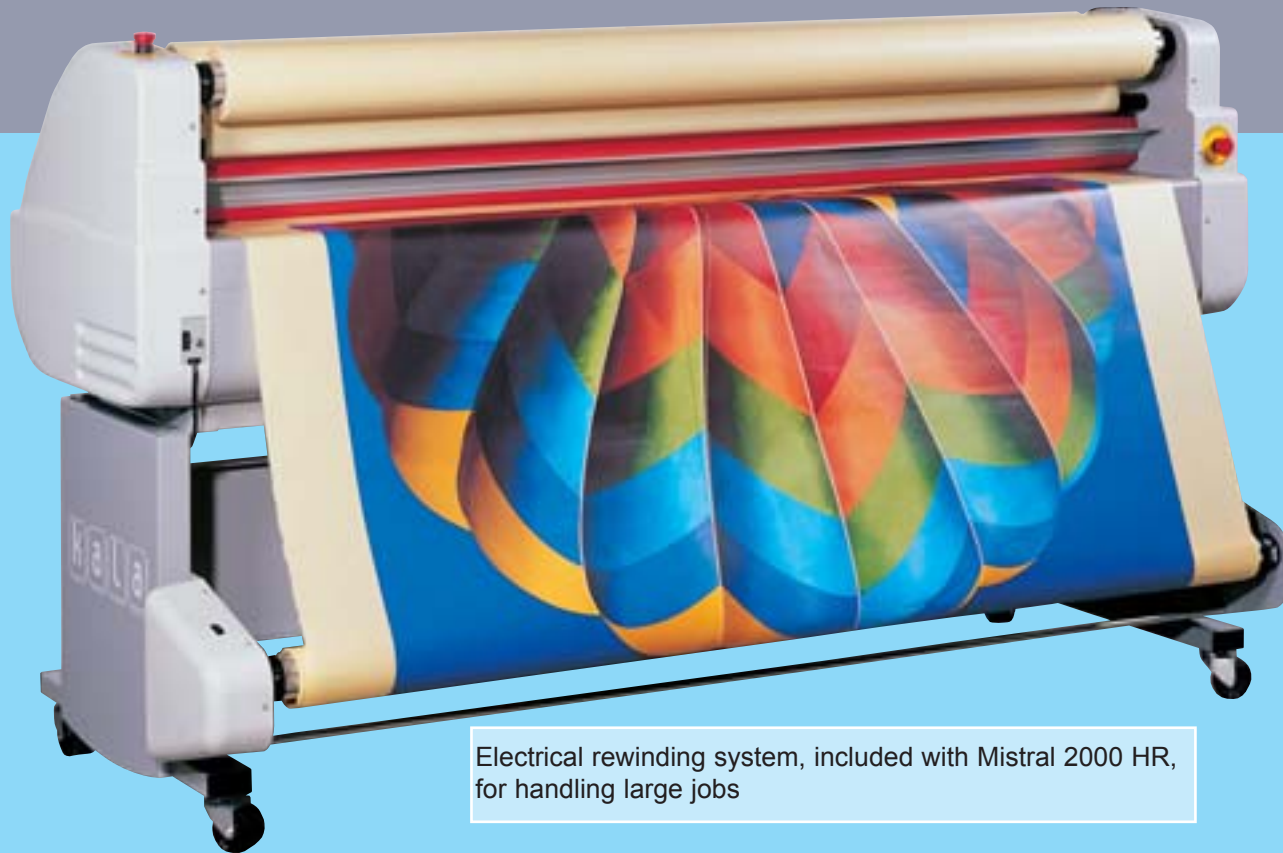
Pivoting feeding tray facilitates easy loading of film rolls. Connected to a safety device installed in the machine, it provides maximum security to user while loading.



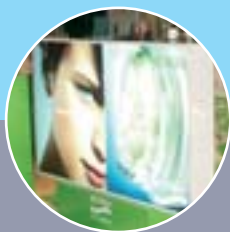
Mistral 2000HR is a next generation laminator made to satisfy the requirements of professional print houses employing mini-jumbo printers and can handle any image up to 2.10 metres (83") width.

# MISTRAL 2000 HR

## Technical Specifications



Electrical rewinding system, included with Mistral 2000 HR, for handling large jobs



Creative applications with Mistral 2000 HR

Max. working width	2100 mm (83")
Length of the roller	2140 mm (84¼")
Diameter of the heating rollers	114 mm (4½")
Max. thickness of print + board	25 mm (1")
Upper heating roller	yes, 20 to 50°C (68 to 122°F)
Adjustment of the tension of the films	yes
Pivoting feeding tray with security protection	yes
Digital display of the roller pressure	yes
Upper & lower winding and unwinding spindles	yes
Number of spindles delivered with the machine	4
Max. speed meters/min - (ft/min)	4 - (13)
Reverse operation	yes
Motor control pedal	yes
Emergency stop button	2
Stand mounted on self-locking castors	yes
Electrical print rewinding system	included
Power of the motor (W)	100
Heating power (W)	3000
Voltage	230V / 50-60Hz single phase
Amperes	14,5 amps
Size of the machine on stand	L245 x D76 x H137cm - (97"x30"x54")
Weight of the machine kg (Lbs)	400 - (880)
Size of the shipping crate	L260 x P90 x H170 cm - (103"x36"x67")
Shipping weight kg (Lbs)	480 - (1056)
Made in France	
EC - Certification	



KALA SAS - Parc de l'Ecotay  
35 410 Nouvoitou - France

Tel. : +33 (0)2 99 37 64 64 - Fax : +33 (0)2 99 37 64 65  
Internet : [www.kala.fr](http://www.kala.fr) - e-mail : [info@kala.fr](mailto:info@kala.fr)